



# The Shofar

Beth Am Shalom - A Reform Jewish Congregation  
*A New Beginning . . . to an Old Tradition*  
[www.bethamshalom.org](http://www.bethamshalom.org)

## Message from Rabbi

### HOPE THROUGH ACTION

I cannot recall a time when I have felt more betrayed by our Federal Government than I feel now. I spent much (really, too much) of my July vacation following the debt ceiling debate unfolding in Washington D. C. "Debate" is too nice a word for what degenerated into a partisan finger-pointing-fest. I am not alone. "...a record 82 percent of Americans now say they disapprove of Congress" (New York Times/CBS News Poll, 8/4/'11). Who can blame us? And why are 18 percent of Americans comfortable with a Senate Minority Leader who repeatedly declares that his number one job is to defeat the President in 2012? Pardon my naiveté; I thought our legislators' job was to help the American people win. Foolish me. I guess I was foolish to become hopeful when our President and House Speaker reached a "grand bargain," endorsed by economists of all stripes, only to see it swept from the table by Tea Partiers. They believe that millionaires should continue to enjoy tax breaks and hugely profitable oil companies, government subsidies, while cutting, cutting, cutting spending. Since they would not listen to the scores of economists who told us we cannot do this and create jobs, perhaps they would have listened to Republican Stanley Oland from Montana who said, "Unless you have working people, you don't have revenue from taxes. If you cut spending, jobs will be eliminated and you won't get any revenue. Every dollar spent creates jobs."

Well, they did (cut spending) and jobs will (be eliminated). The Recession will not be ending any time soon. Yes, we must curb spending and pay down our debt, but this was not the time to do only that. My anger and feelings of betrayal do not stop with Senator Mitch McConnell, Jr. or Tea Partiers. It hurt to watch the Speaker and President Obama retreat from the "balanced approach" they knew was right. Yes, the former can argue that he could not get the votes needed, and the latter can argue he could not let the nation default. But, they blinked! We needed them to lead, make the tough choices and face down the ignorant fringe. When faced with an intransigent House, President Clinton let them shut down the government, and he AND the American people came out ahead. We knew whom to blame then, and we would have known in July. I am deeply saddened by this President who traded away the "grand bargain" for only one objective—delaying the next debt ceiling decision until after the November 2012 election.

The bottom line is this: I want our elected officials to care more about the American people than getting reelected. I want them to lead and govern and help us solve our problems instead of working so hard to gain political advantage over their opponents. Don't you?

September 2011  
Elul 5771 / Tishrei 5772  
Volume 5, Issue 3



Check out our  
**WEBSITE!**

[www.bethamshalom.org](http://www.bethamshalom.org)

### What's Inside:

- Worship Services .....2
- Rabbi.....3
- Cantor .....4
- President .....5
- Religious School .....6
- Tzedakah .....8
- Refuah Shleima.....9
- Yahrzeit..... 10
- Memorials..... 11
- Calendar .....14
- Sponsors ..... 18 - 19

Continued on Page 3



## Worship Services

**Friday, Sep. 2**  
7:00PM Erev Shabbat Family Service

*Shabbat Shof'tim*

Deut. 16: 18-21:9  
Haftarah Isaiah 51:12-52:12

**Saturday, Sep. 3**  
10:00AM Morning Shabbat Service  
w/

Bar Mitzvah of Philip Bell

**Friday, Sep. 9**  
8:00PM Erev Shabbat Service

*Shabbat Ki Tetze*

Deit. 21:10-25:19  
Haftarah Isaiah 54:1-10

**Saturday, Sep. 10**  
10:00AM Morning Shabbat Service  
w/

Bat Mitzvah of Samantha Katz

**Friday, Sep. 16**  
8:00PM Erev Shabbat Service

*Shabbat Ki Tavo*

Deut. 26:1-29:8  
Haftarah Isaiah 60:1-22

**Friday, Sep. 23**  
8:00PM Erev Shabbat Service with  
Anniversaries

*Shabbat Nitzavim-Vayalech*

Deut. 29:9-31:30  
Haftarah Isaiah 61:10-63:9

**Saturday, Sep. 24**  
8:00PM Shabbat Selichot Service

**Friday, Sep. 30**  
8:00PM Shabbat Shuvah Service

### HIGH HOLY DAYS

**Rosh Hashanah:**  
**Wednesday, Sep 28** 8:00PM  
**Thursday, Sep 29** 10:00AM  
**Family Service** 1:30PM

**Kol Nidre:**  
**Friday, Oct 7** 8:00PM

**Yom Kippur:**  
**Saturday, Oct 8** 10:00AM  
**Family Service** 1:15PM  
**Yizkor/Neilah** 2:30PM

We are accepting seasonal clothing and non-perishable food for the needy and homeless of the Lakewood area through **Lakewood Outreach.** You may leave donations in the box in the foyer.

**UPCOMING EVENTS:**

**THIS MONTH:**

ADULT ACADEMY  
Part #5 "Jewish Justices"  
10:00AM  
Thursday, Sep. 1, 2011

MEN'S CLUB BARBECUE  
Sunday, Sep. 18, 2011  
12:00 Noon

CHAVURAH MEETING  
Tuesday, Sep. 27, 2011  
1:00PM

HIGH HOLY DAYS

EREV ROSH HASHANAH  
September 28, 2011

KOL NIDRE  
October 7, 2011

YOM KIPPUR  
October 8, 2011

**Be sure to see page 15 for**

**High Holy Day information:**

**New Year Greetings**

**Flower Orders**

**and**

**Memorial Book Remembrances**

## Rabbi's Message cont'd

The approach of the New Year makes me pause and try to gain some perspective. I do not want to greet the New Year completely pessimistic and hopeless. Yet, it is hard. I speak with Temple members who are struggling with unemployment and underemployment. I meet with and speak with Temple leaders who are properly worried (as am I) about our fiscal health. I struck up a conversation with a couple at a wedding and learned that the husband was retired, but not voluntarily. He lost his job, and after a couple of years, just gave up looking for a new one. Our country is doing a tremendous disservice to our college graduates who cannot find jobs and face the prospect of never doing as well as their older peers AND younger ones who will graduate when the economy improves and whom employers will be more eager to hire. Right in our backyard, more homeless people are moving to Tent City, Lakewood, while the township forced the residents to tear down their wooden shacks. How warm will the tents keep them in the winter?

Stephen J. Dubner of *Freakonomics Radio* (and co-author of a book by the same title) reminds us that we are much better off than we were a century ago in most areas: housing, healthcare, the environment, nutrition, etc. He's right, but I don't just want to look back. I want to look ahead with some hope—hope that more Americans will find meaningful work, our children and grandchildren will finish school and be able to succeed on their own and those working now will be able to enjoy a dignified retirement. I also want a government that works for us.

I think we can find some hope in doing whatever we can do help those who are suffering hunger, joblessness, homelessness and real hopelessness. Here are some tasks I hope you will adopt as a way of responding positively to the difficulties we confront:

Since Passover, we have been collecting food, personal care items, propane tanks and tents to help our neighbors in Tent City. Many of you have already been generous; please keep giving what you can. We also need volunteers to transport the items to Tent City. Donations are also needed. Checks can be written and sent to:

Lakewood Outreach  
PO Box 326  
Lakewood, NJ 08701

We continue to be a part of the Interfaith Hospitality Network. We partner with Christ United Methodist Church of Lakewood by preparing one dinner every three months for the families staying in the shelter and sending one volunteer to spend the night. We need more volunteers wanting to do one, the other or both. Call or email me or Nancy Fossetta who coordinates this program for BAS.

Donating to MAZON which battles hunger and its causes nationwide has been a staple at Beth Am Shalom, and today the needs are even greater, and if our leaders do not get their acts together, the needs will only grow.

MAZON: A Jewish Response to Hunger  
10495 Santa Monica Blvd.  
Suite 100  
Los Angeles, CA 90025

I wish all of you, my dear congregants a friends, a good New Year; may it bring hope and prosperity to all.

*Rabbi Steve*

## Cantor's Message

### Artists 4 Israel Director speaks at Beth Am Shalom

In July, Craig Dershowitz, the founder and director of the group Artists 4 Israel, spoke at Friday night services about his organization that is doing exciting work changing attitudes about Israel through the arts. The goals of Artists 4 Israel are the following:

1. Unite artists to create and showcase culturally relevant works which promote a positive image of Israel.
2. Foster artist exchanges between communities in different countries, who wish to connect and express their support for Israel through art.
3. Create outlets for artistic individuals to channel their support for Israel.
4. Counter misconceptions that the arts community does not stand behind Israel in its efforts to live in peace and security, defending against terrorism.
5. Utilize the arts to counter misconceptions about Israel in the media and popular culture.
6. Educate about Israel's rich culture and her struggle for survival and ongoing effort to achieve a peaceful existence; past, present, and future.
7. Provide the community with a resource of pro-Israel artists.

In January of 2009, Artists 4 Israel united a community of creative individuals working together to express Israel's right to exist in peace and safety – a virtual army of artists. They were “a cultural resistance” to mounting pressure against Israel in the arts community. On July 23, 2009, Artists 4 Israel was proved prescient when Ethan Bronner wrote in the New York Times that “ Hamas Shifts from Rocket to Culture War.” In June 2010, a number of international bands cancelled concerts in Israel, prompting Israel's largest music promoter to describe the artistic attacks against the country as “cultural terrorism.”

Artists 4 Israel has fought the cultural war and is now prepared to act as a security fence to protect against this new form of terrorism. According to Rebecca Sugar, Director of Birthright Israel, NEXT NY: Artists 4 Israel represents the best that emerging young Jewish leaders have to offer. Their approach to Israel advocacy is unique and exciting, unlike anything else happening in the Jewish world today. All of us should take notice of this dynamic, young group of innovators and support their work. If anyone can change popular thinking about Israel for the better, this group can.

Beth Am Shalom thanks Craig for sharing his enthusiasm and passion when he spoke to the congregation in July. Please contact Craig or the organization to show your support. Artists 4 Israel sites are: [www.artists4israel.org](http://www.artists4israel.org), [www.paintisrael.org](http://www.paintisrael.org) and [www.dershowitzcenter.org](http://www.dershowitzcenter.org). You can also visit their blog at: <http://artists4israel.blogspot.com/> People can sign up for their newsletter by sending an e-mail to [info@artists4israel.org](mailto:info@artists4israel.org) See here: <http://muralitythankyou.weebly.com/> for some great images from their last trip. You can also reach them or make contributions to: Artists 4 Israel, Attention: Tara Gordon, 201 East 66<sup>th</sup> St., Suite 12D, New York, NY 10065.

*Cantor Alisa Forman*

More notes from your Cantor...

- Rabbi Lawrence Forman, father of Cantor Forman, spoke on the future of Reform Judaism at Friday night services in July. Special thanks to him for gracing our bima and sharing his thoughts with us.
- Our new teen choir will be holding rehearsals for the holidays throughout September. Please call the cantor at the temple if you or someone you know would be interested in joining.
- Our Junior Choir, B'nai Ruach, will also be rehearsing in September for the High Holidays. Please encourage your children to join. Your child can join either before or after the High Holidays.

## President's Message

**AND THE TIMES THEY ARE A CHANGIN.** These words written by Bob Dylan back in 1964, remain true today. In 1964 I would never have believed the issues I would be confronting today, living in a 'free and open society. I need to share these issues with you, because they all affect the health and safety of our home as well as the integrity of our community. There is a poster on the entrance to our building. It says, "If you see something say something". It is part of a national campaign spear headed by Jewish Federation in hopes of averting situations which might impact the safety of our congregation. In addition to this there is a new law in the state of New Jersey. It is called "The Clemente Law". Named for Tyler Clemente, the Rutgers University student who committed suicide, it addresses issues of harassment, sexual harassment and bullying. I cannot believe that as President of Temple I am even writing about these subjects, but as I said before, **"The times they are a changin."**

I will begin by briefly discussing safety. Some of my best friends think I take this issue a bit too far, but as Bob Dylan said **"The times they are a changin'"**, and so we must adapt accordingly. As you enter the building, you will all notice a new keypad in the vestibule of our Temple. It should signal to all of you that a building-wide alarm system has been installed and activated. It was designed specifically to address the needs of our temple home and the people in it. In addition, at the advice of the Lakewood Police Department, we have formed a 'Security Committee'. I have asked the following individuals to join this committee; Bill Mullis, Carl Nelson, Marvin Wasserman, Rabbi Gold, and Josh Inzelbuch. They will be meeting to create policies and procedures geared towards assuring the safety of all of us. If you want to be a part of this committee, please let me know. Some additional ways in which you can help include volunteering in the Temple office during religious school hours so that the doors can be locked and ushering during Temple services.

Additionally, the Clemente Law, the result of an unfortunate set of circumstances which occurred in 2010, is named for a young man named Tyler Clemente. Because of what happened to Tyler, the legislature in New Jersey established stringent criteria for educational institutions to follow in cases of sexual harassment, harassment and bullying of any type. If you are interested in reviewing the policy please contact me or visit the Temple office. There will be a copy available for your review. I truly hope that we NEVER have to face this problem, but as I said before, **"The times they are a changing"**, and not always for the better.

*Pam Ligorski*

President

Dear Friends,

**The High Holidays are quickly approaching. I am already planning my menu and worrying about my Kol Nidre appeal. Please accept my best wishes to each of you and your family. On behalf of myself and my family, I wish you all a Happy, Healthy New Year and a year filled with Peace and contentment.**

Pam

## Religious School

Yom Wholedit Samayach – Happy Birthday to:

Daniel Mayer, 8 Elul  
Madison Heagele, 23 Elul

Jessica Hankins, 9 Elul  
Jared Katz, 25 Elul  
Jacob Hankins, 1

Robert Farrell, 18 Elul  
Daniel Albanese, 27 Elul

The Magen David, the Jewish Star, is made up of two triangles, so is a good Jewish education.

The first triangle is the school. Here, teachers and students work together to be taught and to learn the curriculum.

The second triangle is the home. Here, parents and students must practice what they've been taught;

Whether it is listening to your child practice Hebrew reading, discussing the lessons of History class, or practicing the beautiful customs and ceremonies of Judaism, the home is where the lessons learned in school are lived.

Together, our Religious School's goals, to educate and make each of our students and their families practicing Reform Jews, can be achieved with great success.

Please make it a point to stop in and meet your child's teacher(s) and make the connection between Religious school and home.

Wishing you and your family, La Shana Tovah, a healthy, happy and prosperous New Year.

Mazel tov to Philip Bell and Samantha Katz and their families on celebrating their Bar/Bat Mitzvahs this month.

Thank you to all of you who continue to support RS with your donations.

*Josh Tuzelbuch,*

Religious School Administrator



## Men's Club

As president of the Men's Club of Beth Am Shalom, I would like to address this article to the fathers who send their children to Hebrew School during the school year.

As the school year begins, I am reaching out to those of you whose children grace our establishment on Sunday mornings. Why don't you join them once a month? When you enter the building with them and they part to go to their classrooms, find your way to the Men's Club door by following your nose to the delicious brunch of bagels, lox (yes, we do serve lox) and cream cheese. Enjoy the food, discussion, and interaction with others gathering for the same purpose. I encourage you to be role models for your children because when they see your interest and involvement, it sparks theirs! So, mark your calendars to join us once a month. Instead of dropping your child off at the curb, park your car and enter with your child and feel good about it. Once you're involved, you will see how the members of the Men's Club spend their time and energies, and you will see how and why it makes generous donations of its funds to uplift and enhance the Temple and its members.

La Shana Tovah!

Anyone wishing information on the Men's Club can contact me any time at 732-323-0899, or any of the other officers— Glen Levine (VP), Fischel Myers (Secretary), or Stan Lechner (Treasurer). Any of us can be contacted through the central office.

*Stan Kane*, President

## Sisterhood

Summer is just about over, school has started, and we are left with are some memories of many hot days. Looking ahead to our fall schedule and anticipating a good year, we have a fairly good line-up of topics to consider.

We are planning a Sisterhood Brunch, October 30, for paid-up Sisterhood members, along with a speaker on "Two Faiths, One Family." I think this is a very appropriate topic for us since we do have a number of families of two faiths in our congregation.

In November, we will be having a speaker talk about the Township of Lakewood, past and present.

Over the winter, we would like to invite again, a representative of the Wells Fargo Bank with another interesting topic, which will be announced at a later date.

February, we will be having our Sweetheart Brunch, and looking toward the spring, we will be holding our second Mahjong/Game Party. This is really something to look forward to as this event was a great success this past year.

I wish you all a Happy and healthy New Year and also an easy fast.

*Evelyn Zucker*, President

# TZEDAKAH

## YAHARZEIT FUND

Barbara Mayer Weiss in loving memory of Leon Mayer

Barbara Mayer Weiss in loving memory of Marcella Mayer

Sylvia Levey in loving memory of her mother, Jean Feinstein

Rose & Sheldon Fialkoff in loving memory of her sister, Miriam Pearce

William Freiman in loving memory of his first wife, Ruth Freiman

Lynn & Vic Silverman in loving memory of her mother, Edna Dimentstein

Lynn & Vic Silverman in loving memory of his mother, Bertha Silverman

Hannah & Jack Greenstein in loving memory of her father, Hugo Frankenberg

Fran & Harold Gimpel in loving memory of his brother, Frederick Gimpel

Rose & Shelly Fialkoff in loving memory of his mother, Bella Fialkoff

Elaine Roffman in loving memory of her father, Abraham Seed

Harriet Selinger in loving memory of her parents, Jack & Goldye Surasky

Samuel Litman in loving memory of his father-in-law, Philip Honig

Dollie Sussna in loving memory of her brother, David Nadler

Patricia Reeves in loving memory of her husband, Cedric Reeves

Morris & Pam Ligorski in loving memory of his mother, Mollie Ligorski

Judy & Marty Lefsky in loving memory of her father, Arthur Wiener

Kareol & Joel Schnitzer in loving memory of his father, Irving Cohen

Shelly & Anita Franklin in loving memory of his grandmother, Hattie Franklin

Michael Yudkin in loving memory of his father, Robert Yudkin

Marilyn Karl in loving memory of her father, Avner Weckstein

Fran & Harold Gimpel in loving memory of her father, Milton Hill

Harry Dorowsky in loving memory of his uncle, Arthur Scheld

Sue Dalin & Family in loving memory of her beloved niece, Ali Ganezer

Lorraine & Martin Kaplan in loving memory of her brother, Sol Weiss

Raymond & Susan Zolla in loving memory of his father, Morris Zolla

Arlene & Joseph Grasso in loving memory of her father, Bernard Soffer

Arlene & Joseph Grasso in loving memory of her mother, Irma Soffer

Fran & Hal Gimpel in loving memory of his niece, Nancy Ritchie

Nancy Schmarak in loving memory of her parents, Anne and Adolf Schmarak

Carol & Irwin Young in loving memory of her mother-in-law, Helen Granoff

**CANTOR'S DISCRETIONARY FUND**

David Fried in loving memory of Dr. Carl Weese; husband of Florence Weese; father of Dr. James L. Weese, Dr. William Weese, Dr. Deborah Weese-Mayer; and father-in-law of Dr. Robert Mayer and Barbara Fried Weese

## TREES

Harriet Saltzman in loving memory of Mary Feldman

Fran & Hal Gimpel in honor of the 21<sup>st</sup> birthdays of Celia Ligorski & Jacqueline Ligorski

Barbara Ascher in loving memory of Lieby Kletzky

## RABBI'S DISCRETIONARY FUND

Wayne & Rose Friedland

The Schiller Family and Jackie & Jesse Wolstein send thanks for making their day perfect.

Laurie & Ron Keats in appreciation to Rabbi for the naming ceremony of their new grandson, Tyler Jacob, after his great-grandfather, Sidney Thurschwell, a guiding light

Stan Lechner in loving memory of his wife, Reba Lechner

Millie & Jim Donahue send best wishes to Anna Greer on the engagement of her granddaughter, Jennifer

## GENERAL

The Ligorski Family sends Get Well wishes to Hal Gimpel

The Ligorski Family sends Get Well wishes to Shari Schiller

Bernard Rubin in memory of the anniversary of his parents, Beulah & Murray Rubin

Fern Frankenberg and Sondra Ranoff: Mazel Tov to Rose Levine on becoming a great-grandma to twin girls

Rose & Wayne Friedland in honor of the wedding of the daughter of Ron & Shari Schiller

**TZEDAKAH continued**

**RELIGIOUS SCHOOL**

Karen & Chuck Blenner with thanks for the care and concern this past year to Mike & Jacky Philips

Norma Weissberg sends Congratulations and Mazel Tov to Jennifer Sacks

Norma Deutch Weissberg in loving memory of her father, Isidor Mininsohn

Mike & Jacky Philips: Mazel Tov on the marriage of Jackie Schiller Wolstein

Karen & Chuck Blenner with gratitude for all their help over the past 5 months to:  
Sonny Wallace  
Ilana Silvan  
Pam Ligorski  
Missy Francis  
Fran Cohen

Karen & Chuck Blenner on the birth of Sonny Wallace's grandson, Liam

The Ligorski Family: Mazel Tov to Laurie & Ron Keats on the birth of their new grandchild

**"CIRCLE OF FRIENDS"**

Bill & Dorothy Freiman  
Wayne & Rose Friedland  
Howard & Lois Geschwind  
Harold & Francine Gimpel  
Ben Goldberg  
Arnold Schlisserman  
Phyllis Schlisserman  
Dollie Sussna

**"SUSTAINING MEMBERS"**

Hazel Gluck  
Wayne & Rose Friedland  
Howard & Peggy Kaplan  
Morris & Pam Ligorski  
Dennis & Shelly Newman  
Helene & Harold Wechsler  
Harvey & Barbara York

**ONEG SHABBAT FUND**

Paul & Marion Schneider in honor of their 68<sup>th</sup> Anniversary August 11

Seymour & Lucille Berger in honor of their Anniversary September 11

Anthony & Janine Cifelli in honor of their Anniversary September 11

Bernard & Gail Grabelle in honor of their Anniversary September 12

Harold & Elaine Kravetz in honor of their Anniversary September 15



**Refuah Shleima**

Fred & Shirley Ashton  
Andrea Avella  
Lillian Bauman  
Shelly Beach  
Karen Castor  
David Cohen  
Steven Cohen  
Gail Cutler  
Dov Eisak  
Michele Eisenhauer  
Shelly Fialkoff  
Vivian Forman  
Trish Frankenberg  
Shawn Friedman

Leonard Gibel  
Linda Gillick  
Michael Gillick  
Harold Gimpel  
Jean Gold  
Blanche Goldberg  
Irwin Goodman  
Frieda Grossman  
Phyllis Guida  
Mark Kaban  
Howard Katz  
Thomas Kelly  
Rayna Kravetz  
Lisa Krislow

June Madden  
Anne Maltzman  
Florence Markowitz  
Milton Markowitz  
Ida Olshin  
Pat Reeves  
Ron Salsbury  
Gloria Sandbank  
Ellen Shurak  
Howie Singer  
Steven Stern  
Frieda Topf  
Susan Zolla  
Steve Zucker

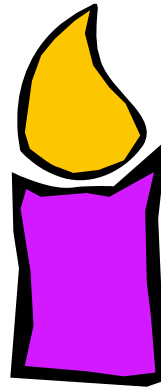
# Yahrzeits

## September 2

Irving Cohen  
Nathan Deutch  
Hattie Franklin  
Abe Friedland  
Mike Jacobs  
Reba Lechner  
Alice Liptzin  
Celia Mininsohn  
Gertrude Nathanson  
Gertrude Sandbank  
Marci Silverblatt  
Avnerr Weckstein

## September 9

Harold Albert  
Edith Bergman  
Mimi Goldman  
Milton Hill  
Scott Levine  
Ann Oxman  
Norman Pinto  
Sally Rabiner  
Betty Schwartz  
Claire Selinger  
Frank Stock  
Lawrence Strauss  
Ruth Tolchin  
Frances Tolman  
Belle Wallace



## September 16

Edward Ackerman  
Murray Becker  
Frieda Berenter  
Israel Drukaroff  
Jack Frank  
Samuel Gluck  
Alex Goldberg  
Helen Granoff  
Frances Levittan  
David Mininsohn  
Jacob Moroff  
Nancy Ritchie  
Ben Spector  
Flora Wasserlauf  
Sydney Weiss



## September 23

Suzanne Abboudi  
Leslie Wallace Advokat  
Sonia Baumgarten  
Norman Bendelson  
Gital Budman  
Joan Gertner  
Nathan Goodman  
Mona Komar  
Morrie Lerner  
Arthur Segal  
Mary Skolnick

## September 30

Leonard Basspff  
Jacob Biller  
Abraham Brandes  
B.G. Donahue  
Sidney Feldman  
Gloria Frank  
Fred Frankenberg  
Marcus Geschwind  
Robert Glassman  
Maurice Hannes  
Gerald Kolinsky  
Eli Metz  
Bernard Nozek  
Paul Savell  
Milton Shapiro  
Helen Smith  
Goldye Surasky  
Esther Swyer  
Jesse Young

# MEMORIALS

**Beth Olam Cemetery**  
*Located at 1235 Highway 70 in Lakewood*

A perpetual care memorial park with ground level grave markers only.

For information and availability, contact:  
 Sonya Wallace - 732.323.8722 or  
 Marilyn Gilbert – 732.657.4119 or  
 Temple Office - 732.363.2800

\* \* \* \* \*

**Toms River Jewish Cemetery**  
*Whitty Road, Toms River*

Section One reserved for Jewish decedents, with traditional upright grave markers.  
 Section Two reserved for non-Jewish decedents, with ground level grave markers only.  
 Section Three reserved for Jewish decedents, with ground level grave markers only.

For information and availability, contact:  
 Michael Philips - 732.914.0010 or  
 Temple Office - 732-363-2800

**The Rabbi, Cantor, Officers and Members of the Congregation extend their heartfelt sympathy to . . .**

*Lorraine Kaplan and Family on the loss of her brother, Sol Weiss*

*Florence Markowitz on the loss of her dear friend, Alice Delvano*

*Beth Phelan and Family on the loss of her father, Morton Gudel*

*Fred Feldman and Family on the loss of his mother, Anne Feldman*

**When Tragedy Strikes**

Tragedy often comes suddenly and unannounced, therefore, it is wise to plan for the eventuality when death touches us. We want to be there for you, and accordingly, we have prepared this emergency guideline, which we hope you will save:

1. If a loved one becomes seriously ill and is taken to the hospital, please call Rabbi Gold at his temple office.
2. If the situation is grave, do not hesitate to call Rabbi Gold at his home: 732-363-4986.
3. If the Rabbi is unavailable, we do have contingency plans. Please call a Temple Officer or Committee Chairperson listed below:

Pamela Ligorski .....732-505-8204  
 Charles Flum ..... 732-240-3437  
 Francine Gimpel.....732-657-7120

Cemetery Committee:  
 Sonya Wallace .....732-323-8722  
 Marilyn Gilbert..... 732-657-4119  
 Mike Philips.....732-914-0010

**Memorializing Our Loved Ones**

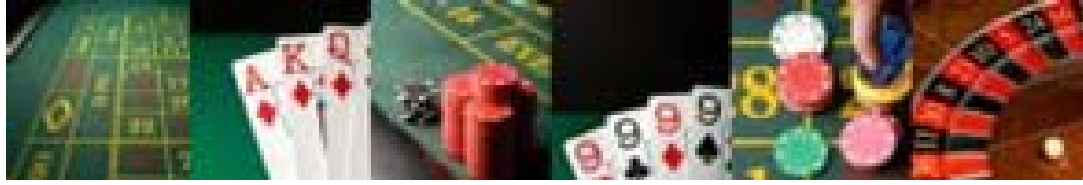
Temple has different ways for you to keep alive the memory of your loved ones.

There is the Memorial Wall of bronze Yahrzeit plaques in the hallway. The cost for the bronze plaque is \$250.  
 All names on these Memorial Plaques go into the annual Yom Kippur Memorial Booklet.

There are also Patio Pavers that may be used in memory of a loved one. The cost of a Patio Paver is \$150.

There will be more options for memorialization in the very near future as we are still in the planning and designing stage of the displays in our new building.

**Please contact the Temple Office at 732-363-2800**



# SAVE THE DATE

## October 22, 2011

### Casino Night and Gift Auction

**We are NOW accepting donations of  
Gift Baskets  
Gift Cards  
and**

#### **Gaming Table Sponsorships**

Blackjack Tables - \$100.00

Roulette Tables - \$200

Texas Holdem Table - \$300

Craps Table - \$500.00

Please contact the office at 732 363-2800  
about your contribution.

Mark your calendar and plan on being there for  
Great food, gaming, and prizes

## MEET THE NEW CONGREGANT

*Because all the members of Beth Am Shalom are important and valued, this column seeks to introduce new members to you. Each month, we can get to know more about a new member. You may have similar interests, and you may want to know more about him or her. This month, new member Joan Weiss, has agreed to share some things about her life.*

New member, Joan Weiss, was born in the Bronx, New York, where she and her husband lived for a number of years before moving to Old Bridge, New Jersey. She lived there for 30 years. After her husband died, she moved in with her children in Old Bridge.

Joan is very close to her brother who was a great help when her husband passed away. He visits 3 to 4 times a year and comes with her to temple when he is in town. She sees her nieces and nephew as often as time and distance allow. She also sees her husband's brother and family.

Joan's son, David, is now living in California with his family, and Joan is now a grandmother. David works with computers. Seven years ago Joan and her daughter, Alisa, moved to Manchester, where Alisa works at the Jackson library. It was Joan's husband's dream to own a home, and he helped make that possible.

Joan is an artist whose work has been exhibited at the Jackson and Manchester libraries. She has always loved to paint and has taken many classes. Upon the suggestion of a friend, she exhibited her work in a gallery four years ago. She paints landscapes using oils or acrylics and feels grateful when people request a painting. She plans to keep painting because she feels "inspired and connected to the divine" when she paints. She loves to travel and paint pictures of sacred sites.

Joan has been involved in the healing arts for the past 25 years and enjoys reading books, attending classes, and watching the Veria channel on the subject of healing using essential oils, herbal teas, and nutritional foods. She is a fan of science fiction and enjoys reading the books of Ray Bradbury, Heinlein, and Isaac Asimov. She and her family love Star Trek.

Joan loves working in her garden because she says there she feels the beauty in the flowers. She is grateful to have her 6 year old West Highland White Terrier and her daughter's cat for they give her so much love.

## OTHER NOTICES

### Ocean County Library Programs:

#### **"Author of American ideals program slated for 2 branches"**

What: Emma Lazaris programs & exhibit  
When/Where: Jackson, Sep 8; Plumsted Sep 23  
Contact: Larry Meegan, (732) 349-6200, ext 5906  
lmeegan@theoceancountylibrary.org

#### **"Jewish songwriters & the Great American Songbook"**

What: Natinal exhibit & related programs  
When: Exhibit: Sep 7 thru Oct 21  
Concert: Sep 10  
Discussions: Oct 3 & 5  
Contact: Larry Meegan, (732) 249-6200, ext 5906  
lmeegan@theoceancountylibrary.org

~ ~ ~

### **A note about our handicapped parking spaces:**

Our handicapped parking is one of our best kept secrets! It is time we shared it with all our members and visitors.

By now, we are all accustomed to seeing handicapped spaces directly in front of a building's main entrance. This is not always the case, nor is this necessary, and our Temple is a case in point.

Rabbi Steve personally paced off the distance between several of the handicapped spaces and found the distance to be SHORTER than from many of the spaces directly in front of the building.

Most importantly, of course, our handicapped spaces are safer and easier to use; we have furnished each space with a ramp and if you use them, you will enjoy a barrier-free "journey" from your start to finish.

We will add some additional signs guiding drivers to this parking section.

### **From the Financial Vice-President:**

Please, if you haven't yet paid last year's Holiday pledge, we would appreciate it if you would send it in now.

Thank you,  
Joan Weiss

Calendar page

**NEW YEAR GREETINGS**

Please send us your Rosh Hashanah greetings by **September 10<sup>th</sup>** so they can be published in the October issue of the Shofar.

The minimum donation is \$5.00. Please make your check payable to Beth Am Shalom and write "Greetings" on the memo line.

~ ~ ~ ~ ~

**MEMORIAL BOOKLET**

This book is a Beth Am Shalom tradition listing the names of our departed loved ones and is used at Yiskor Services on Yom Kippur afternoon.

Please send in the names of your loved ones to be listed in the Memorial Book along with your donation to Temple by **September 14<sup>th</sup>**.

Please make you check payable to Beth Am Shalom and write "Memorial Book" on the memo line.

**"The Memory of the Righteous is for a blessing"**

~ ~ ~ ~ ~

**IMPORTANT NOTICE**  
**FROM THE**  
**RITUAL COMMITTEE**

In fairness to your fellow congregants, we ask that you refrain from savings seats during the High Holy Day services.

After each service, the custodian will remove any items left on the seats and take them to the main office.

**HIGH HOLY DAY FLOWERS**

If you wish to donate toward the beautiful flowers that enhance our Bimah and Temple entrance during the High Holy Days, please fill out the form below and return it with your check for \$50.00 to the Temple Office no later than **September 14<sup>th</sup>**. This will ensure that your name will be included in the Memorial Booklet. Your name will also be announced from the Bimah.

Thank you,  
Roz Terzi  
Ritual Co-Chairperson

**High Holy Day Flowers**

**Donated By:**

\_\_\_\_\_

**In memory of:**

\_\_\_\_\_

\_\_\_\_\_

\_\_\_\_\_

**On which day would you like your Memorial Donation to be announced?**

**Rosh Hashanah** \_\_\_\_\_

**Yom Kippur** \_\_\_\_\_

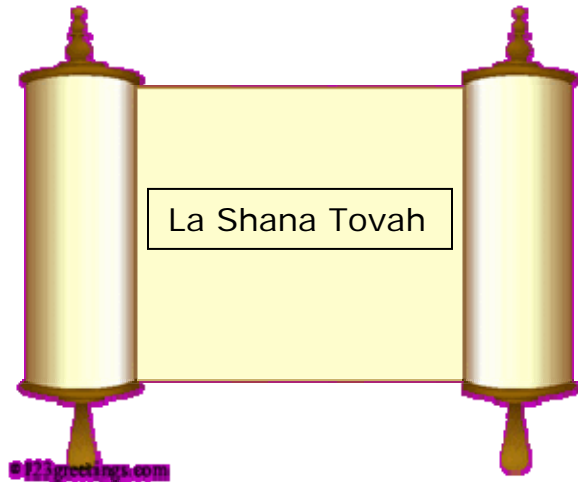
**Either Holy Day** \_\_\_\_\_

**Donation: \$50.00**

### NEW YEAR GREETINGS

**Beth Am Shalom Board of Trustees would like to wish all of our Congregants a Happy and Healthy New Year!**

James & Mildred Donahue  
David Drukaroff  
Mildred Drukaroff  
Fern Frankenberg  
Marilyn Gilbert  
Francine & Harold Gimpel  
Jean Gold  
Lester & Susan Kostick  
The Ligorski Family  
Rita Rudenstein



### MAKING A DONATION IS EASY

In an effort to make it easier for you to help make the office run more efficiently, we request that the form below be used when making a donation. Please fill it out and mail or drop it off at Temple, **along with your check.** Thank you for your cooperation.

(The minimum donation for an acknowledgement card to be sent is \$10.00)

*Funds to which donations can be made are:*

Rabbi Stanley & Myra Yedwab Adult Academy of Judaism, Sheldon Puritz Building Fund, Harry David Sussna Memorial Fund, Merrill Pollinger Scholarship Fund, Rabbi's Discretionary Fund, Building Fund, General Fund, Oneg Shabbat, Religious School, Honorial/Memorial, Social Action, Yahrzeit, Youth Group, Prayer Book\*

\*Please note: while lesser donations are welcome, the cost of a Prayer Book is now \$35.00 & large print is \$45.00

Please accept the following donation(s) to the fund indicated below:

From: \_\_\_\_\_ Address: \_\_\_\_\_

Please send acknowledgment card to:

Please send acknowledgment card to:

\_\_\_\_\_  
\_\_\_\_\_  
\_\_\_\_\_

\_\_\_\_\_  
\_\_\_\_\_  
\_\_\_\_\_

In memory of/in honor of/on the occasion of:

In memory of/in honor of/on the occasion of:

\_\_\_\_\_  
\_\_\_\_\_  
\_\_\_\_\_

\_\_\_\_\_  
\_\_\_\_\_  
\_\_\_\_\_

Fund: \_\_\_\_\_ \$ \_\_\_\_\_ Fund: \_\_\_\_\_ \$ \_\_\_\_\_

## Trees in Israel

Beth Am Shalom is now selling trees in Israel through the Jewish National Fund.

Do you have a simcha such as births, birthdays, engagements, weddings, bar/bat mitzvahs or anniversaries that you wish to honor and/or a death that you want to memorialize?

The cost is \$18.00 per tree.

You can purchase individual trees, a ring of trees (3), a circle of trees (5) or an orchard of trees (10).

**Please contact Fran Gimpel, 732-657-7120**

and give her the name of the honoree or decedent, and the name and address where to send the acknowledgement.

(Donations to this program will be listed on the Tzedakh Page)

### **BETH AM SHALOM CHAVURAH GROUP**

**Meets the 4<sup>th</sup> Tuesday  
of every month at 1:00 PM**

**New Members Welcome**

**For information call:  
Jacky Philips 732 914-8011 or  
Charlotte Ehrmann 732 349-2715**

**Or, just drop in, we'll be  
glad to see you!**

**Refreshments Served**

**Yearly Dues:  
\$12 single                      \$25 couple**

### **Someone in the Hospital?**

Kimball Hospital is no longer sending us (or any congregation) its list of Jewish patients due to privacy rules. If a family member or Temple member is in Kimball or any other hospital, please inform Rabbi Steve right away by calling the Temple office.

Thank you.

### **TEMPLE MEMBER LAID OFF**

#### **MATH & SCIENCE TUTOR**

(For K-12<sup>th</sup> Grades)  
Call **Dave Farrell: 732-766-6494**

#### **PIATE DJ & KARAOKE**

("Party In A Truck Entertainment")  
Call **Dave: 732-581-8503**

## BLOOMFIELD-COOPER JEWISH CHAPELS, Inc.

Since 1978, the Bloomfield Family has managed  
And operated funeral Chapels with traditional  
Jewish values, dignity, care and respect.

Located in:

Lakewood • Ocean • Manalapan

**1-800-247-5235**

L. Bloomfield Dir./Mgr. NJ Lic. #3357  
A. Bloomfield Mgr./Dir. NJ Lic. #4074

*Special Occasions Are  
Our Specialty!*

**The Mill at  
Spring Lake Heights**

**Serving Prime Steaks and  
Fresh Seafood**

Elegant Interiors, Superb Cuisine,  
and Scenic Lakeside Views make

The Mill the perfect setting

for your Wedding, Bar/Bat Mitzvah,  
Sweet Sixteen, Anniversary Party,  
Shower or other celebration!

*a new Menu,  
a new Feeling,  
for a new  
Generation*

Banquet Facilities for Parties up to 250.

101 Old Mill Road  
Spring Lake Heights, NJ 07762  
**732-449-1800**  
www.TheMillNJ.com



[WWW.BELKOFFGOLDSTEINFUNERALCHAPEL.COM](http://WWW.BELKOFFGOLDSTEINFUNERALCHAPEL.COM)

*Serving the community  
with compassion & care,  
at reasonable cost,  
for over 30 years.*

*In* your time of need you can rely on **Belkoff Goldstein**  
to guide you through your darkest hour. You can find  
solace in knowing that we are independently Jewish owned,  
this means that our Jewish family, who is knowledgeable in  
your customs and traditions, is working for you.

Can others say the same?



**BELKOFF  
GOLDSTEIN  
FUNERAL CHAPEL**

313 Second Street, Lakewood, NJ 08701  
**732.364.0900 ■ 800.487.2553**



Consultation & estimates without obligation

Funded pre-planned funerals  
with guaranteed pricing

Residential visits available



**Martin Goldstein**  
MANAGER / NJ LIC #8825

**Nesanel M. Rabinstein**  
DIRECTOR / NJ LIC #8621

WORLD WIDE ARRANGEMENTS  
AND SHIPPING



Weichert



Gina Klein  
Sales Representative

Weichert Million Dollar Sales Club

office 732.240.0500 • fax 732.244.6361  
cell 732.267.2066

gklein@weichert.com

www.ginakleinsellsrealestate.com



1322 Hooper Ave.  
Tom's River, NJ 08753



The Writing Coach

Overcome your fear of writing  
Strengthen your writing skills

Learn simple, effective  
techniques for successful  
Drafting  
Revising  
Proofreading  
Editing

Group Workshops Individual Tutoring

RocheLle Newman, BA, MA

NJ Certified English Teacher  
30 Years Experience  
ETS Trained SAT II Essay Scorer

**NJASK Writing Tasks**  
**GEPA Writing Tasks**  
**HSPA Writing Tasks**  
**SAT II Essay**  
**College Application Essays**

Phone: (732) 367-4633

Fax: (732) 901-0110

Email: [rsn23@mac.com](mailto:rsn23@mac.com)

FORM

Shelly Newman

732-367-4633  
732-901-0110 (Fax)  
[rsn23@mac.com](mailto:rsn23@mac.com)

FUNCTION

Booth 111 Building 3  
Red Bank Antique Center  
226 West Front Street  
Red Bank, NJ 07701  
732-842-4336

a  
n  
d



NEWMAN ASSOCIATES

Dennis R. Newman, P.E.  
Principal

7 London Drive  
Jackson, NJ 08527

(732) 901-0110  
E-mail: [anoldsaw@aol.com](mailto:anoldsaw@aol.com)



30 Years Experience

*Kitchens By Frank*

Custom Kitchens Designs  
Fine Cabinetry by Wood-Mode, Brookhaven & Schrock

Ph: (732) 364-1343  
Fax: (732) 364-1477

2345 Highway 9  
Toms River, NJ 08755

*CARING MEDICAL ASSOCIATES*

*PAMELA LITMAN, WHNP, MSN*  
*Women's Health Nurse Practitioner*

*409 Main Street, Toms River, NJ 08753*  
*phone: (732) 557-6600 fax: (732) 557-6900*

*Vanity Fare Caterers*

*Weddings & Banquets*

Vanity Fare Caterers is Ocean County's best kept secret,  
offers superb cuisine, friendly service and impeccable attention to detail.  
Specializing in Bar/Bat Mitzvahs, Weddings, Anniversary Parties and other celebrations!  
Conveniently located across from Beth Am Shalom, next to an award winning hotel.

**Special discounted party packages for all members of the Beth Am Shalom Congregation.**

1600 Route 70 East  
Lakewood, New Jersey, 08701

[www.vanityfarenj.com](http://www.vanityfarenj.com)

[vanityfarenj@aol.com](mailto:vanityfarenj@aol.com)

732.364.6400

BETH AM SHALOM  
 1235 Highway 70  
 Lakewood, NJ 08701

<b>BETH AM SHALOM</b>	<b><i>Religious School Calendar</i></b>		
<p>1235 Highway 70            Lakewood, NJ 08701            Ph: 732-363-2800 • Fax: 732-363-7823</p> <p>Rabbi Stephen D. Gold            Cantor Alisa T. Forman</p> <p>Rabbi Stanley Yedwab, Rabbi Emeritus            Josh Inzelbuch, Educational Director            Pam Ligorski, President            Charles Flum, Vice President            Francine Gimpel, 2<sup>nd</sup> VP            Joan Weiss, Financial VP            Mark Kovar, Treasurer            Laurie Keats, Secretary            Barbara Hankins, Office Admin / Editor            Barbara &amp; Henry Yuson, Webmasters</p>	MONTH	CLOSED	SPECIAL EVENTS
	September		School starts: Grades K-6, Sun. 9/11 10 AM to 12 Noon Grades 3-9, Tues. 9/13 4:30 – 6:30 PM Sun. 18 <sup>th</sup> , 3 <sup>rd</sup> GR book ceremony & BBQ Fri. 1 <sup>st</sup> : 7:00 Family Service
	October	9	Sun 16 <sup>th</sup> & Tues 18 <sup>th</sup> : Classes visit the Sukkah, students to provide their own meal. Friday, 28 <sup>th</sup> : Consecration
	November	13, 27	Fri. 4 <sup>th</sup> : 7 <sup>th</sup> & 8 <sup>th</sup> Grade Service
	December	25, 27	Fri. 2 <sup>nd</sup> : 6 <sup>th</sup> Grade Service Sun. 18 <sup>th</sup> : Family Chanukah Party
	January	1, 15	Fri. 6 <sup>th</sup> : 5 <sup>th</sup> Grade Service
	February	19	Sun. 5 <sup>th</sup> & Tues. 7 <sup>th</sup> : Tu B'Shevat celebration
	March		Fri. 2 <sup>nd</sup> : 4 <sup>th</sup> Grade Service Sun. 4 <sup>th</sup> : Purim Carnival Wed. 7 <sup>th</sup> : Magilla Reading
	April	8, 10	Sun. 1 <sup>st</sup> : Model Seder, K-3 & 6 <sup>th</sup> Grades Tues. 3 <sup>rd</sup> : Model Seder, 4 & 5, 7-9 Grades
	May	13	Fri. 4 <sup>th</sup> : 3 <sup>rd</sup> Grade Service Fri. 25 <sup>th</sup> : Confirmation
Last Sessions: Sunday, 20 <sup>th</sup> : Grades K-2 Tuesday, 15 <sup>th</sup> : Grades 3-9			
<p><b><i>Check out our website:</i></b>  <b><a href="http://www.bethamshalom.org">www.bethamshalom.org</a></b></p>	<p>*Grades K-3 will be participating in all family services. Although attendance is not mandatory, it is a learning experience, enjoyable for the children, and an honor to be called up to the Bima. Please help your children to have this wonderful experience as often as possible.</p>		
<p>Beth Am Shalom: Reform Jewish Congregation, Est. July 2007 by the merger of Temple Beth Am and Temple Beth Shalom.            Member of the Jewish Federation of Ocean County and Union for Reform Judaism.            The Shofar is a monthly periodical. Annual Subscription cost for mailing is \$35.            Issue Date: September 2011, Volume 5, Issue Number 3</p>			